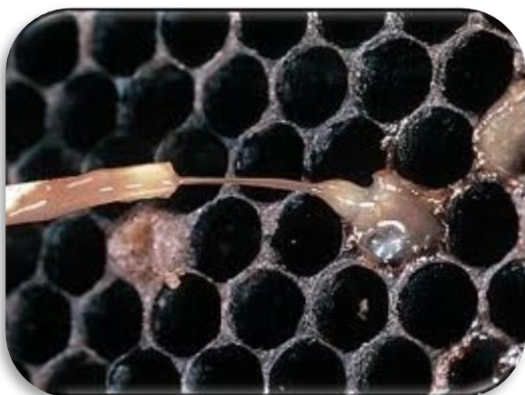


Stop American Foulbrood!



Identifying American Foulbrood, a spore forming bacterial brood disease, is very important as it is highly contagious & deadly to bee colonies. Please familiarize yourself with the signs of AFB to prevent disease outbreak. Consult NYBeeWellness.org for resources and links regarding this honeybee disease.

Caused and spread by:

- 1) Used equipment, especially with unknown history
- 2) Bees robbing another hive that is infected
- 3) feeding bees honey & pollen contaminated w/AFB
- 4) Buying infected nucs, bees

Symptoms:

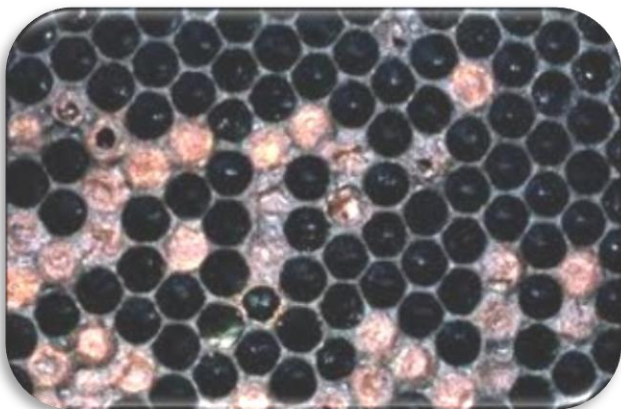
- 1) Scattered brood
- 2) darkened, greasy, and/or perforated cappings
- 3) slimy, discolored cell contents that "rope- out" using a toothpick or match
- 4) Foul, off, decayed smell
- 5) older, desiccated frames will show a tough scale at bottom of the cell

Prevention:

- 1) Regular inspection of the brood
- 2) Maintaining strong, healthy hive
- 3) Avoid used equipment

NY Bee Wellness Workshop

NYBeeWellness.org



Confirm diagnosis:

- 1) send a sample to Beltsville Lab, this will also determine antibiotic resistance level (results ~2 weeks)
- 2) use Vita- American Foulbrood Test kit (immediate)
- 3) Consult with an experienced beekeeper or former/current bee inspector.

See NYBeeWellness.org for protocol & procedure

NOTE: If hive is dead, seal it to prevent robbing and spread of disease. If hive is confirmed- burn the hive and contents, carefully check neighboring hives for evidence of AFB.

Do not try to treat yourself! Seek advice from your local club, NYS Ag & Markets, an experienced beekeeper or former/current bee inspector.



United States
Department of
Agriculture

National Institute
of Food and
Agriculture

NY Bee Wellness Workshops, NYBeeWellness.org
Empire State Honey Producers Association, ESHPA.org

USDA NIFA Beginning Farmers and Ranchers
Development Program, Grant # 2011-494400-30631